

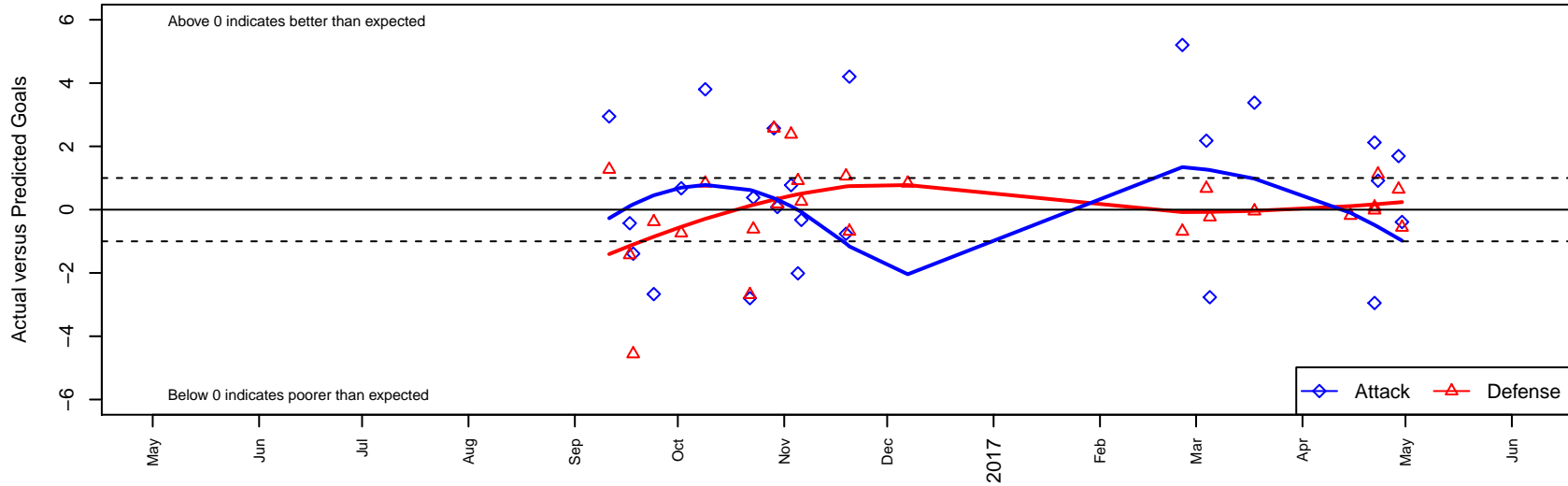
# Washington Timbers Red 2 B04

Washington Timbers  
 Vancouver, WA  
 B04 total strength=1106  
 attack=4.64 defense=1.79  
 fall league = PTT B04 Div 1 Green  
 spr league = Spr OYS B04 Div 1 Green

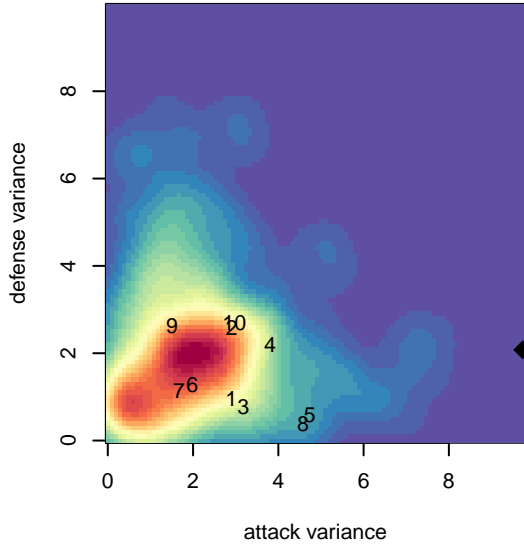
alt names used:  
 WA Timbers 04B Red 2 (Reserves)  
 WA Timbers 04B Red 2 (Reserves)  
 WA Timbers 04B Red 2 (Reserves)

Venues played:  
 2016 PTT B04 Division 1 Green  
 2016 OYS Presidents Cup B04  
 2016 Spr OYS B04 Division 1 Green

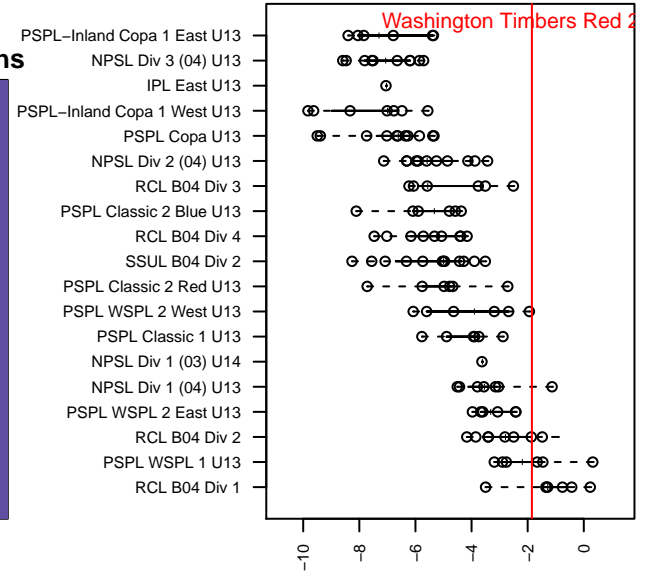
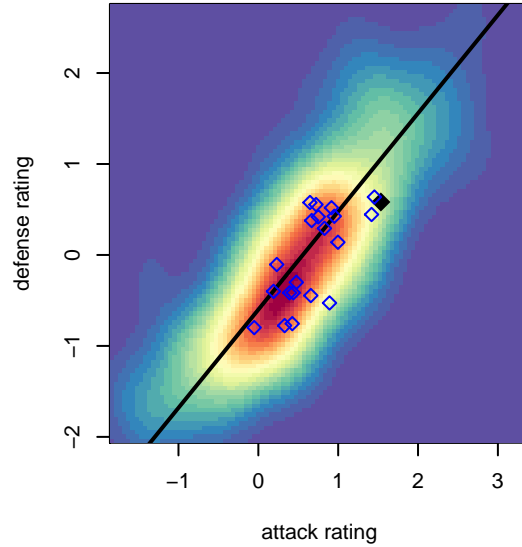
**Washington Timbers Red 2 B04**  
 Dots are actual minus expected GF (blue circles) and GA (red triangles).  
 Blue line is smoothed change in attack strength. Red is smoothed change in defense strength.



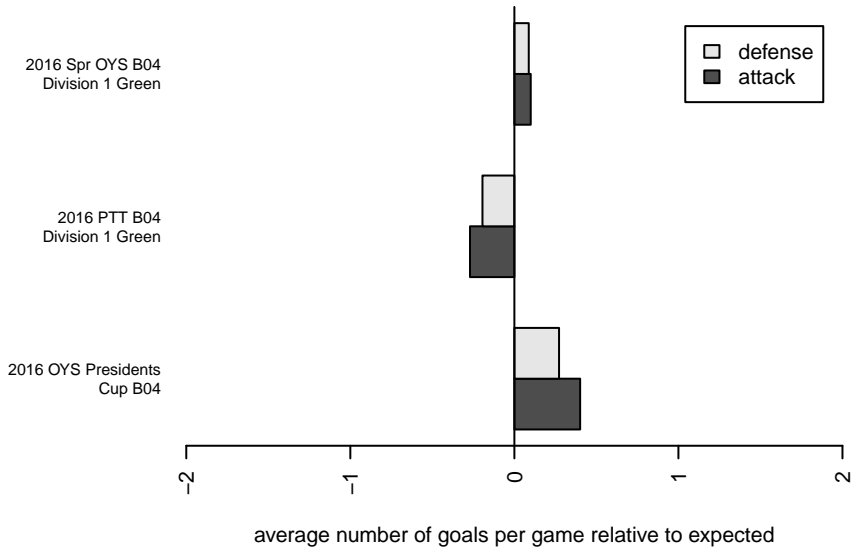
**attack and defense variance (black dot)  
relative to other teams  
and top 10 in region**



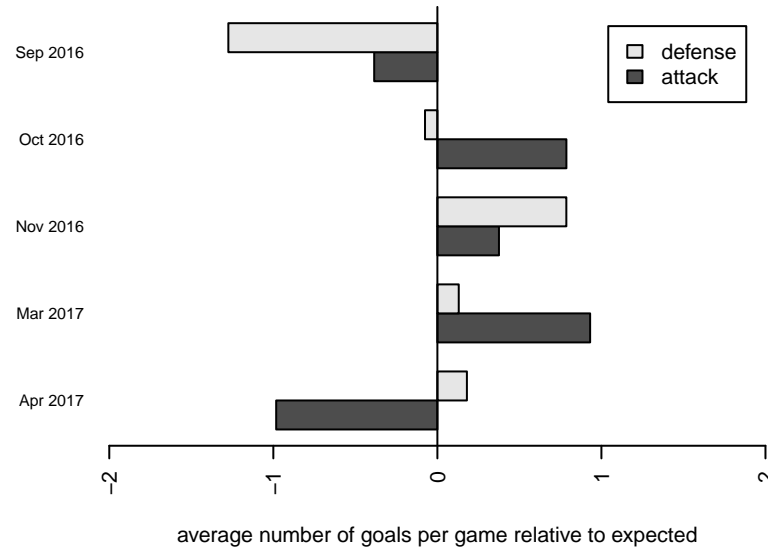
**attack and defense rating  
relative to others at age  
and all opponents in last 13 months**



**Performance relative to 13 month average**



**Performance relative to 13 month average**



<b>date</b>	<b>home</b>		<b>away</b>		<b>venue</b>	<b>pred.home</b>	<b>pred.away</b>
2017-04-30	PCU Union Red 2 B04	2	Washington Timbers Red 2 B04	4	2016 OYS Presidents Cup B04	1.44	4.39
2017-04-29	Washington Timbers White 1 B04	1	Washington Timbers Red 2 B04	4	2016 OYS Presidents Cup B04	1.64	2.31
2017-04-23	Eastside Timbers Black B04	0	Washington Timbers Red 2 B04	7	2016 Spr OYS B04 Division 1 Green	1.12	6.09
2017-04-22	Washington Timbers Red 2 B04	1	HSC Arsenal B04	1	2016 Spr OYS B04 Division 1 Green	3.95	1.08
2017-04-22	BSC Portland Black B04	1	Washington Timbers Red 2 B04	8	2016 Spr OYS B04 Division 1 Green	0.98	5.88
2017-04-15	ETFC Santos Red B04	1	Washington Timbers Red 2 B04	4	2016 Spr OYS B04 Division 1 Green	0.82	11.29
2017-03-18	Washington Timbers Red 2 B04	8	Capital FC Timbers Red B04	1	2016 Spr OYS B04 Division 1 Green	4.62	0.95
2017-03-05	NEU Blue B04	1	Washington Timbers Red 2 B04	7	2016 Spr OYS B04 Division 1 Green	0.77	9.77
2017-03-04	Washington Timbers Red 2 B04	13	Bend FC Timbers White B04	0	2016 Spr OYS B04 Division 1 Green	10.82	0.67
2017-02-25	Washington Timbers Red 2 B04	13	CSC Storm Navy B04	2	2016 Spr OYS B04 Division 1 Green	7.80	1.31
2016-12-07	WAFC Coyotitos B04	0	Washington Timbers Red 2 B04	0	2016 PTT B04 Division 1 Green	0.83	7.20
2016-11-20	CSC Storm Navy B04	2	Washington Timbers Red 2 B04	12	2016 OYS Presidents Cup B04	1.31	7.80
2016-11-19	Washington Timbers Red 2 B04	3	WUSC White B04	0	2016 OYS Presidents Cup B04	3.76	1.06
2016-11-06	Washington Timbers Red 2 B04	7	CUSC Red B04	1	2016 OYS Presidents Cup B04	7.32	1.26
2016-11-05	FC Portland White B04	0	Washington Timbers Red 2 B04	5	2016 OYS Presidents Cup B04	0.92	7.01
2016-11-03	FC Salmon Creek White B04	0	Washington Timbers Red 2 B04	4	2016 PTT B04 Division 1 Green	2.38	3.23
2016-10-30	Washington Timbers Red 2 B04	3	Foothills SC Celtic White B04	1	2016 PTT B04 Division 1 Green	2.92	1.18
2016-10-29	Washington Timbers Red 2 B04	5	Southside SC Azul B04	0	2016 PTT B04 Division 1 Green	2.43	2.57
2016-10-23	THUSC Chromium Black B04	2	Washington Timbers Red 2 B04	3	2016 PTT B04 Division 1 Green	1.38	2.62
2016-10-22	Washington Timbers Red 2 B04	5	CSC Storm Navy B04	4	2016 PTT B04 Division 1 Green	7.80	1.31
2016-10-09	Washington Timbers Red 2 B04	11	WAFC Coyotitos B04	0	2016 PTT B04 Division 1 Green	7.20	0.83
2016-10-02	CUSC Red B04	2	Washington Timbers Red 2 B04	8	2016 PTT B04 Division 1 Green	1.26	7.32
2016-09-24	Washington Timbers Red 2 B04	0	Crossfire Oregon Green I B04	2	2016 PTT B04 Division 1 Green	2.67	1.62
2016-09-18	Washington Timbers Red 2 B04	3	PCU Union Red 2 B04	6	2016 PTT B04 Division 1 Green	4.39	1.44
2016-09-17	Southside SC Azul B04	4	Washington Timbers Red 2 B04	2	2016 PTT B04 Division 1 Green	2.57	2.43
2016-09-11	FC Portland Navy B04	0	Washington Timbers Red 2 B04	7	2016 PTT B04 Division 1 Green	1.27	4.05